

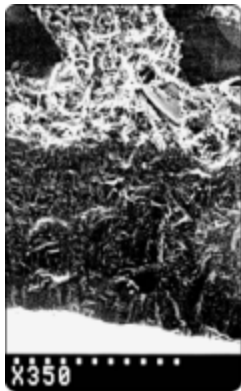
SUMMARY:

AGEM SiC components (process tubes, cantilevers, boats, liners, etc.) can now be SiC-CVD coated for a maximum dimensional length of 2600mm. Our extended furnace capability means that your long SiC parts can now have the benefits of ppb-level impurities and cleaning acid etch resistance.

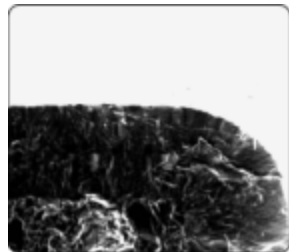
AGEM's superior SiC-CVD coating technology ensures complete confidence that your coating will *not* flake off in process nor in handling & cleaning. The ultra high purity and uniformity of our SiC-CVD coating are consistent with what you have come to expect with AGEM-made products.

CVD COATING:

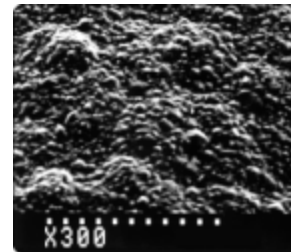
Through our proprietary CVD process, AGEM's SiC CVD-coated products are patented for superior coating adhesion to our substrate, with high-purity and surface uniformity.



A well adhered boundary between the CVD layer and the SiC substrate. When looking at larger shapes such as liners, tubes, and cantilevers, AGEM's SiC-CVD coating has identical characteristics and a similar layer of thickness no matter the size or shape of the component.



An even and continuous SiC-CVD layer. This SEM indicates a typical cross-section view of the AGEM SiC-CVD coating. Magnified view shows an even and continuous SiC-CVD later without voids, cracks, or pores.



Micro surface of CVD coating. AGEM's SiC-CVD patented surface texture causes an anchoring-effect that allows the deposition of LPCVD films to accumulate on the CVD surface without peeling or cracking.

KEY POINTS:

- ✓ Ultra high-purity components
- ✓ Maximum component dimensional length of 2600mm.
- ✓ Chemically impervious to hydrochloric, hydrofluoric and nitric acids.
- ✓ Superior adhesion of SiC-CVD coating to SiC substrate.
- ✓ Superior uniformity of SiC-CVD coating surface finish.
- ✓ Extended life with SiC-CVD coated components.

**Your
Global Partner
in Wafer Processing**

ASAHI GLASS ELECTRONIC MATERIALS
4375 NW 235TH AVENUE
HILLSBORO, OREGON 97124 USA
503.844.9689 PHONE
503.844.7207 FAX
SALES@AGEM-USA.COM
WWW.AGEM-USA.COM